

LOWER PRIOR LAKE IMPLEMENTATION PLAN

Lower Prior Lake is an important recreational and ecological resource to the Prior Lake community, but there is an unseen threat to the health and vitality of this water resource. Although Lower Prior Lake currently meets water quality standards, degraded water quality is of concern in late summer when algae blooms become prevalent. The lake has the potential to degrade over time due to continued untreated stormwater coming into the lake. Furthermore, Lower Prior Lake is located downstream of two other impaired lakes identified by the Minnesota Pollution Control Agency (MPCA): Spring Lake and Upper Prior Lake.

In 2013, the Prior Lake-Spring Lake Watershed District (PLSLWD) completed a diagnostic study that concluded that while the water quality of the upper bay of Lower Prior Lake is strongly influenced by Upper Prior Lake, the water quality of the rest of Lower Prior Lake is strongly influenced by phosphorus loading from the watershed. Therefore, the Lower Prior Lake Protection Project is focused on keeping Lower Prior Lake off of the MPCA's list of impaired waters by installing best management practices in the watershed.

Based on input from PLSLWD Board of Managers, PLSLWD Citizen Advisory Committee (CAC), the City of Prior Lake, Prior Lake Association, and lake residents, a balanced mix of best management practices on publicly owned land and private projects were selected as the primary components of the implementation plan to maintain or improve water quality in Lower Prior Lake. These include such projects as pond expansions, infiltration areas, rain gardens and shoreline buffers.



Funding for the Lower Prior Lake Protection Project is provided in part by the Minnesota Pollution Control Agency through a Grant from the State's Clean Water Partnership Grant Fund.

Watzl's Beach

LAKEFRONT PARK, PRIOR LAKE



Shoreline Restoration Project

Shoreline buffers are one of the best management practices identified in the Lower Prior Lake Implementation Plan. The shoreline restoration at Watzl's Beach combines the efforts of both PLSLWD and the City of Prior Lake to reach the water quality goal of this subwatershed.

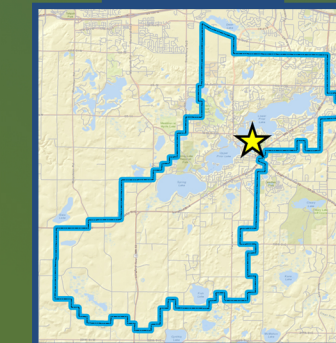
Watzl's Beach is located on the southern end of Lower Prior Lake and is part of Lakefront Park, Prior Lake's flagship city park. The shoreline area at Watzl's beach was previously dominated by invasive plants and erosion was occurring at the shoreline. As such, the site was in desperate need of restoration.

Staff from Prior Lake's Parks Department and a Conservation Corps Minnesota (MCC) crew both contributed to the prep work of the site. The shoreline was first raked and tilled. Next, two different native

seed mixes were spread and a netless erosion control blanket with biodegradable pins was installed. Finally, the MCC crew began planting over 1,300 native plant plugs. Two energetic volunteers and a few City and Watershed District staff finished planting.

The entire project area is currently surrounded with temporary anti-goose fencing, as our winged friends love to eat native seedlings. The posts and fencing will be removed next year after the plants have been established.

Long-term maintenance will include periodic mowing to stop weed species from invading our new native shoreline buffer. The maintenance plan may also include Spot spraying invasive species and prescribed burning, among other practices.



PRIOR LAKE - SPRING LAKE
WATERSHED DISTRICT

November 24, 2015

District Tour



PRIOR LAKE
SPRING LAKE
WATERSHED DISTRICT

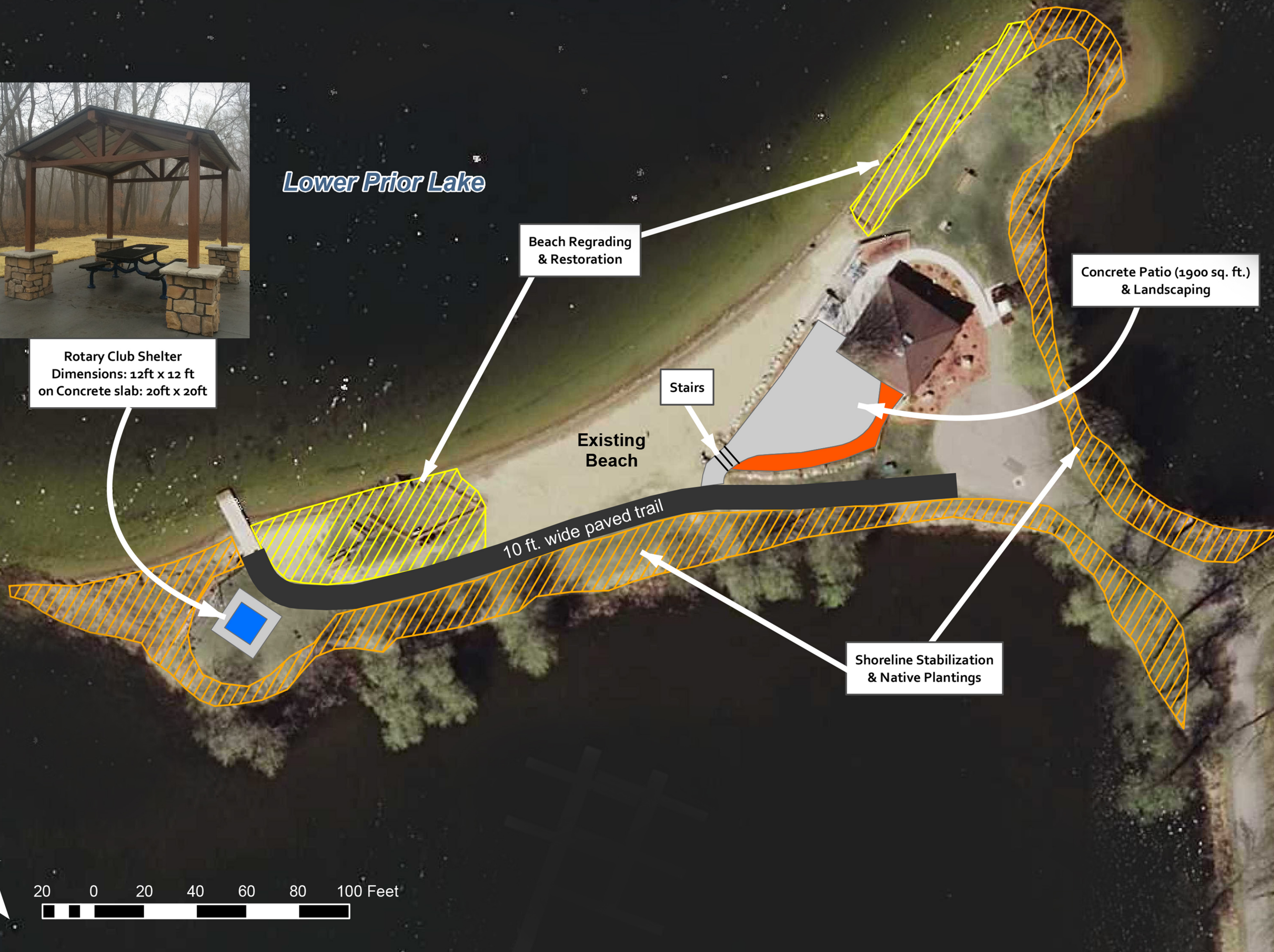
Watzl's Beach
Lakefront Park

Watzl's Beach Shoreline Restoration & Improvements



Rotary Club Shelter
Dimensions: 12ft x 12 ft
on Concrete slab: 20ft x 20ft

Lower Prior Lake



BEFORE



DURING RESTORATION



DURING RESTORATION



BEFORE



DURING RESTORATION

