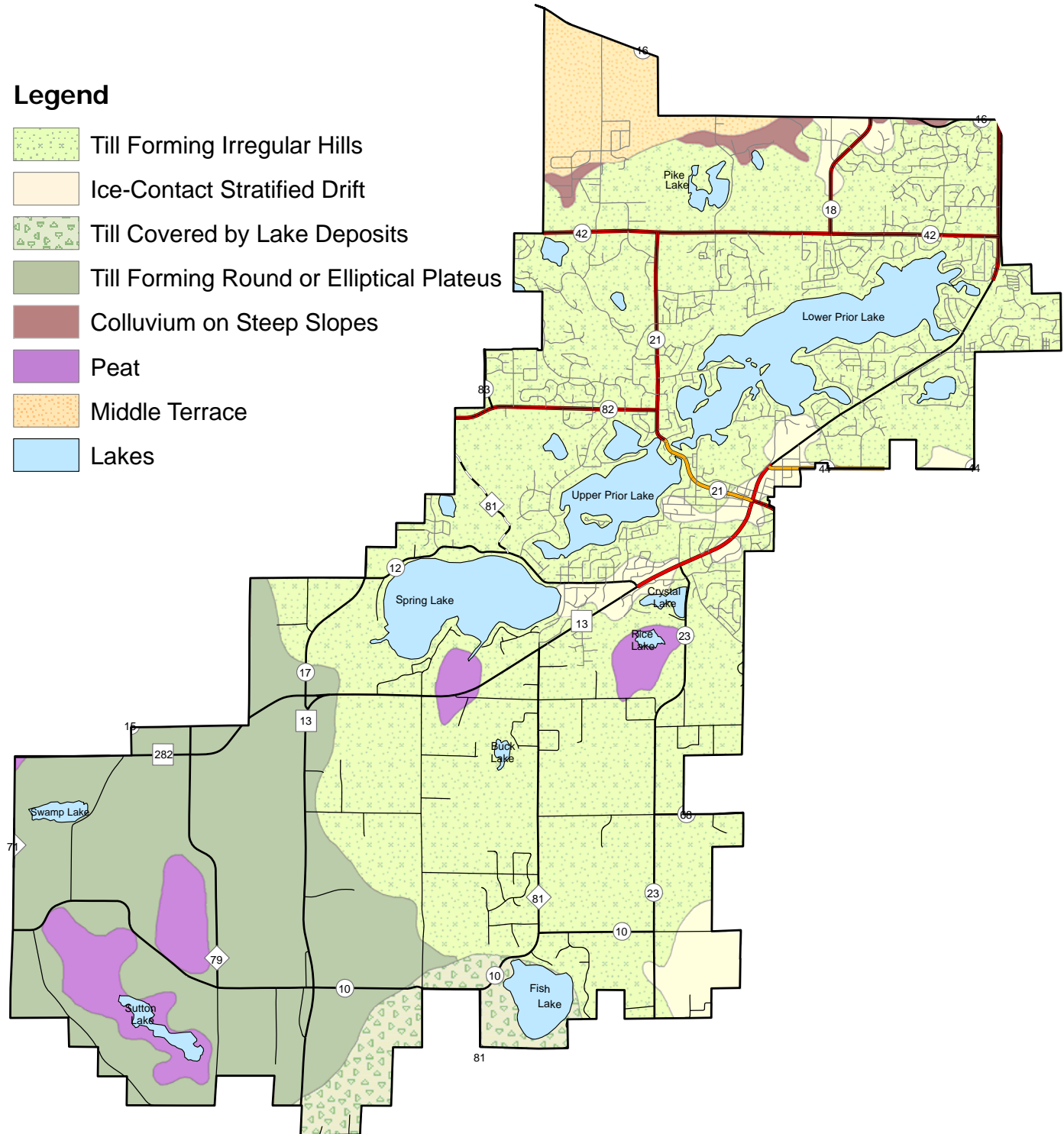


Prior Lake-Spring Lake Watershed District Surficial Geology Map



Legend

-  Till Forming Irregular Hills
-  Ice-Contact Stratified Drift
-  Till Covered by Lake Deposits
-  Till Forming Round or Elliptical Plateaus
-  Colluvium on Steep Slopes
-  Peat
-  Middle Terrace
-  Lakes



Source: Minnesota Geological Society

