

# Prior Lake/Spring Lake Watershed District Aquatic Plant Summary for 2015

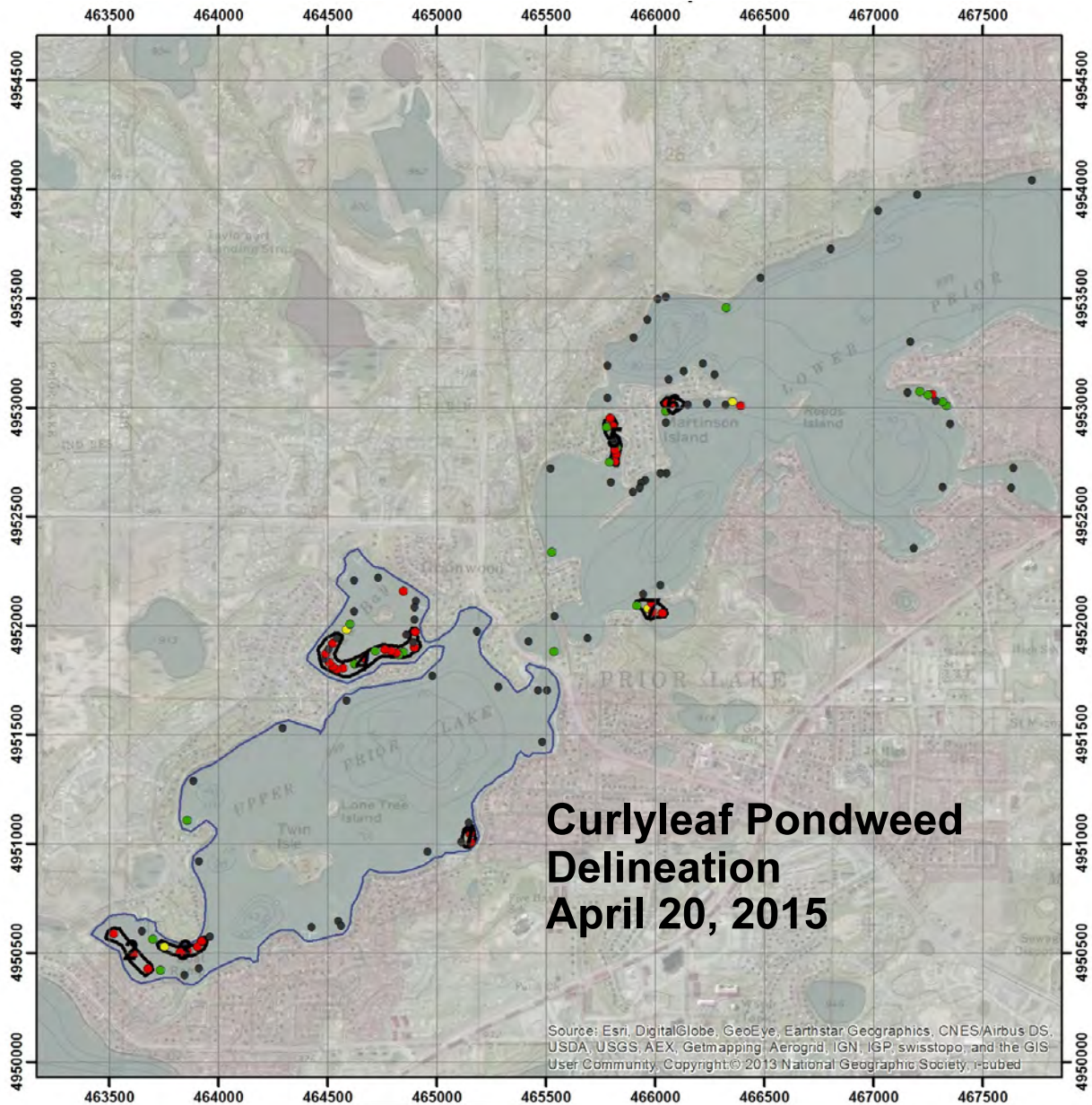
Curlyleaf pondweed delineations for Upper and Lower Prior Lakes, Spring Lake, and Fish Lake.

Eurasian watermilfoil status for Pike Lake.



Curlyleaf pondweed in Spring Lake in May 2015.

**Upper and Lower Prior Lakes:** 21.5 acres of CLP were treated in 2015, about the same acreage is anticipated for 2016.




**Curlyleaf Pondweed  
Delineation  
April 20, 2015**

Source: Esri, DigitalGlobe, GeoEye, Earthstar Geographics, CNES/Airbus DS, USDA, USGS, AEX, Getmapping, Aerogrid, IGN, IGP, swisstopo, and the GIS User Community, Copyright:© 2013 National Geographic Society, Inc.

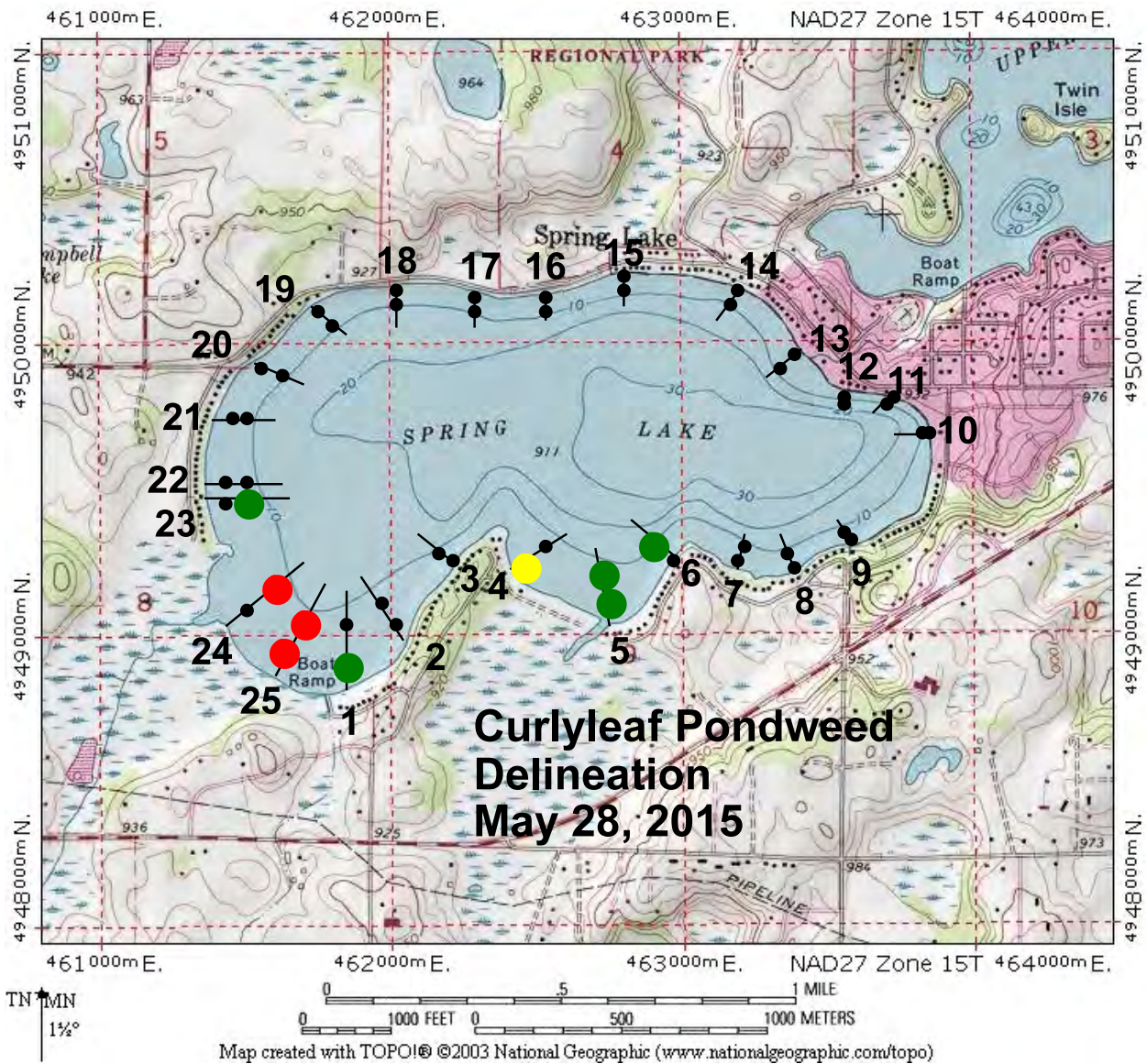
- CLP stem Count**
- 0
  - 1, 2
  - 3
  - 4-20
  - 2015\_Prior\_CLP

Id	CLP_Acres
1	1.1
2	3.42
3	2.33
4	9.21
5	2.16
6	1.29
7	2

21.5 Acres Total

  
 UTM NAD 1983  
 Blue Water Science  
 Field Work: April 20, 2015  
 Map Created: April 21, 2015

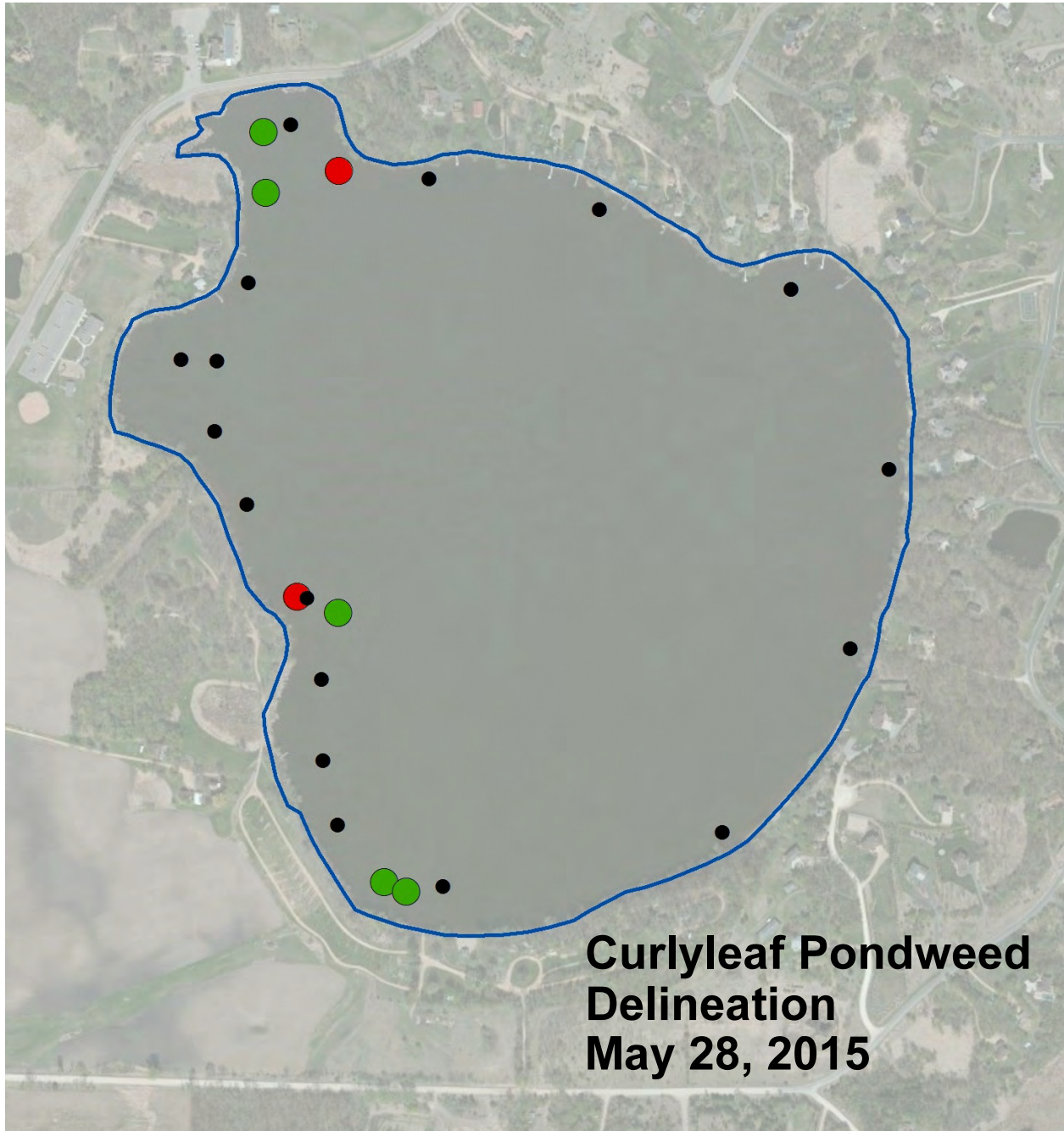
**Spring Lake:** no CLP treatment occurred in 2015, but some treatment is anticipated for 2016.



Key:

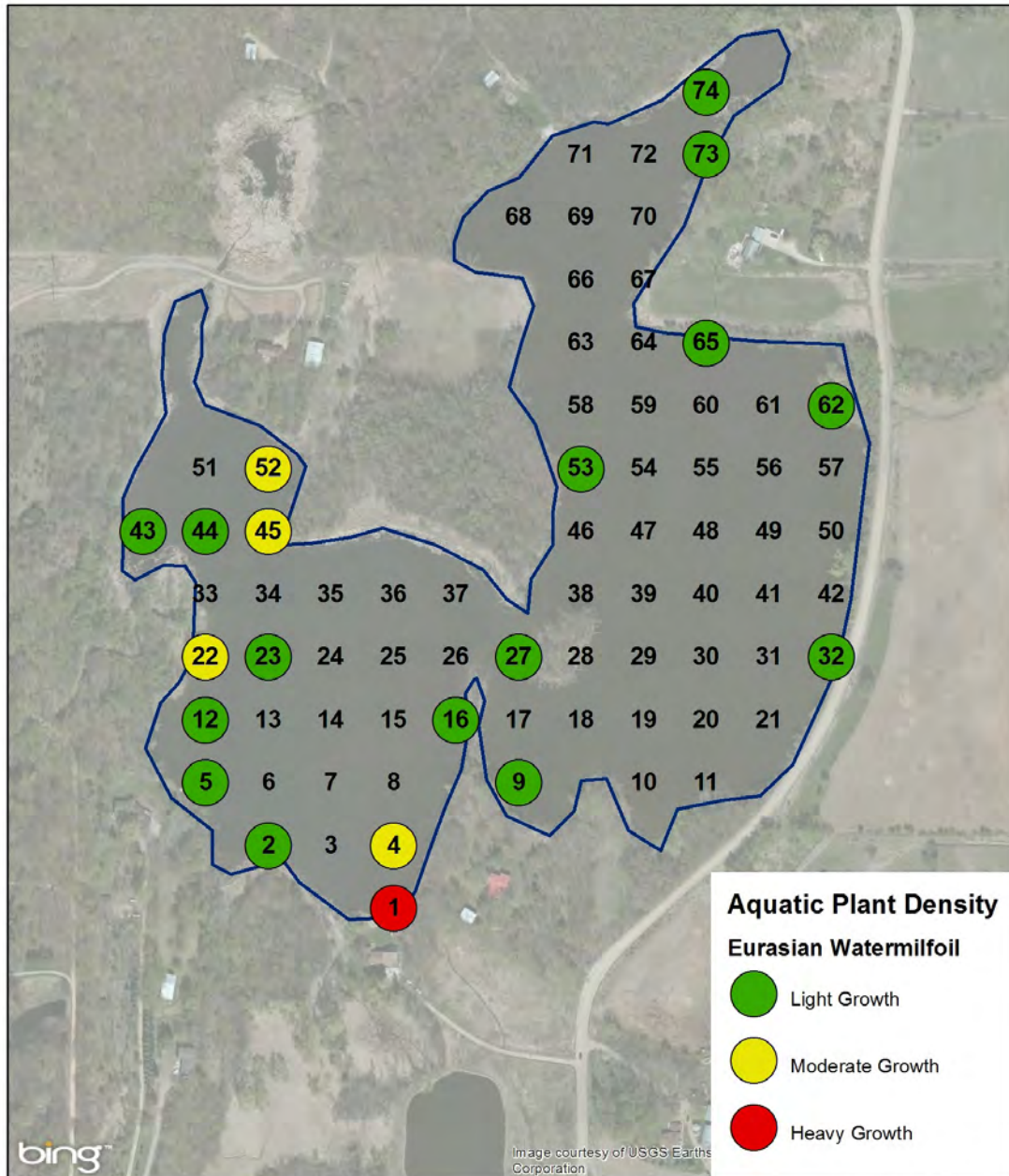
- Black dot = no curlyleaf pondweed
- Green dot = light curlyleaf pondweed growth
- Yellow dot = moderate curlyleaf pondweed growth
- Red dot = heavy curlyleaf pondweed growth

**Fish Lake:** no CLP treatment occurred in 2015. CLP does not seem to produce heavy growth in Fish Lake on an annual basis.



**Pike Lake:** Eurasian watermilfoil is spreading in shallow water around Pike Lake since its discovery in 2012.

Pike Lake Eurasian Watermilfoil August 24, 2015



UTM NAD 1983  
Blue Water Science