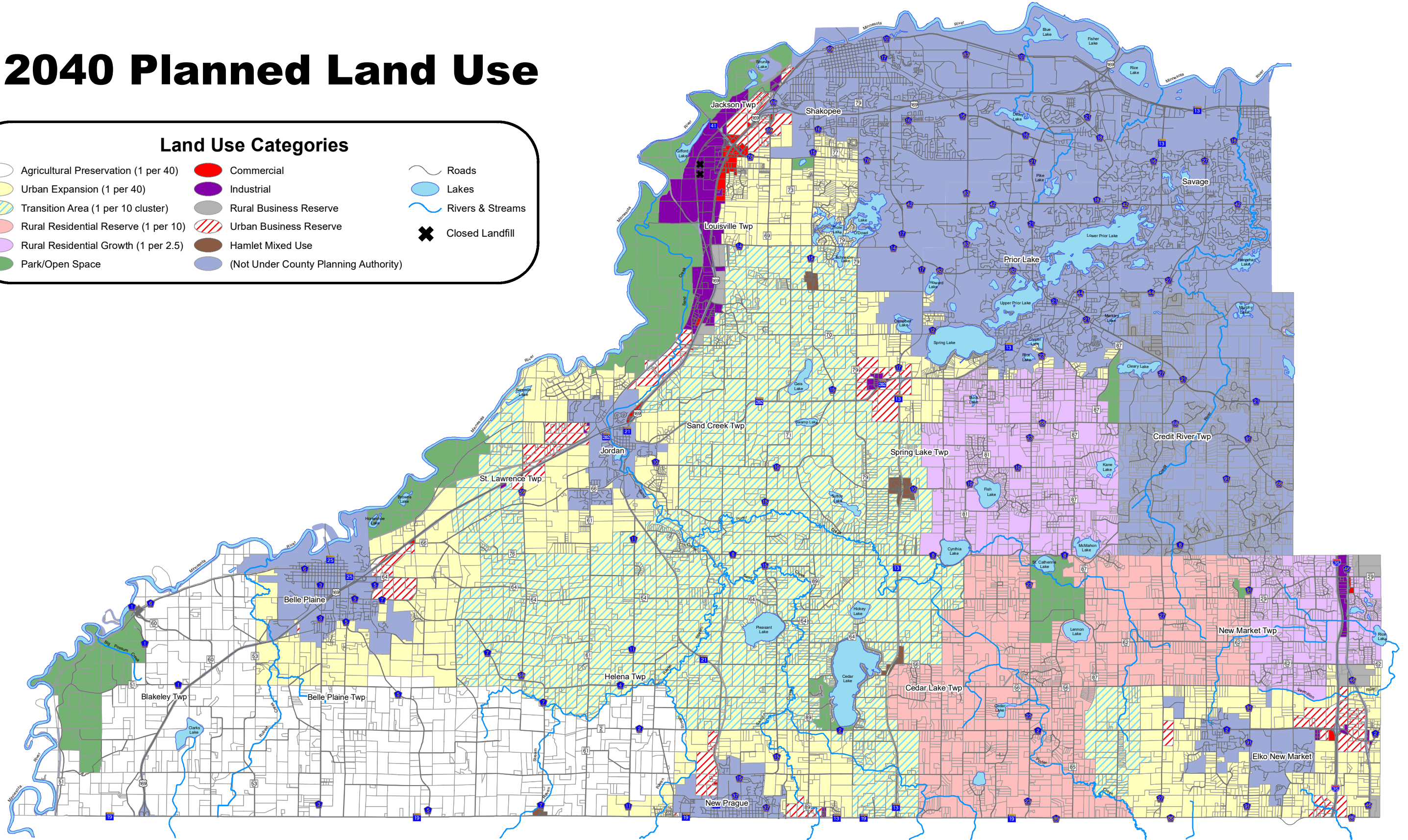




2040 Planned Land Use

Land Use Categories

Agricultural Preservation (1 per 40)	Commercial	Roads
Urban Expansion (1 per 40)	Industrial	Lakes
Transition Area (1 per 10 cluster)	Rural Business Reserve	Rivers & Streams
Rural Residential Reserve (1 per 10)	Urban Business Reserve	Closed Landfill
Rural Residential Growth (1 per 2.5)	Hamlet Mixed Use	
Park/Open Space	(Not Under County Planning Authority)	

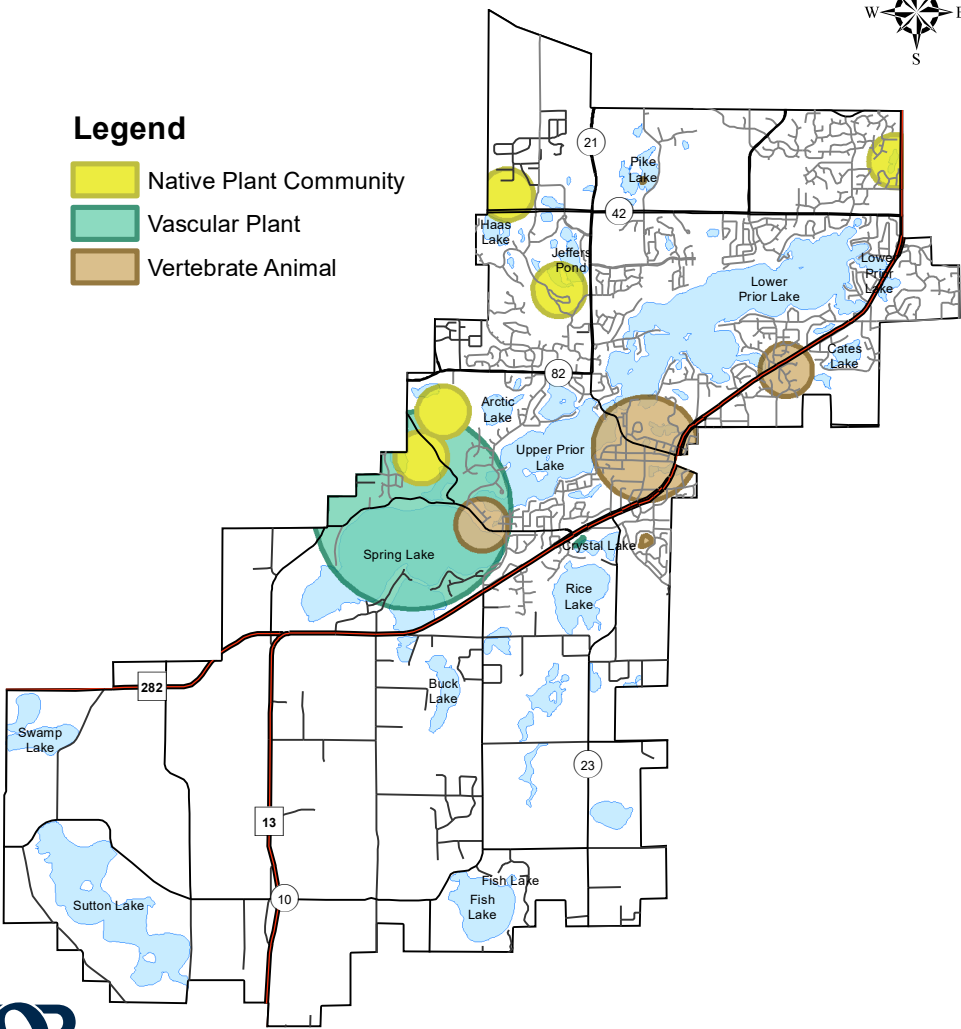


Prior Lake - Spring Lake Watershed District Rare Plants, Animals, and Native Plant Communities



Legend

- Native Plant Community
- Vascular Plant
- Vertebrate Animal







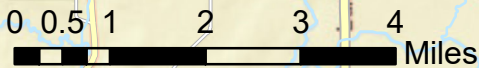
Copyright 2015, State of Minnesota, Department of Natural Resources. Rare features data included here were provided by the Division of Ecological and Water Resources, Minnesota Department of Natural Resources (DNR), and were current as of July 15, 2015. These data are not based on an exhaustive inventory of the state. The lack of data for any geographic area shall not be construed to mean that no significant features are present.
Sources: MN DNR NHIS dataset (2018) Licensed to EOR, Inc.



Date: 11/19/2019 Time: 8:31:41 AM Author: Document Path: X:\Clients\WD\00758_PLS\WD\0014_General_Engineering\2020 WRMP\09_GIMS_ProjectName\GIS\NHISData_MapFor2020WRMP.v2.mxd

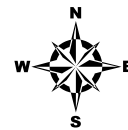
Prior Lake-Spring Lake Watershed District

-  PLSLWD Boundary
-  Lakes
-  Streams
-  Prior Lake Outlet Channel



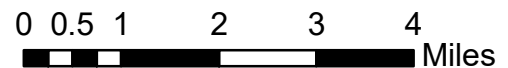
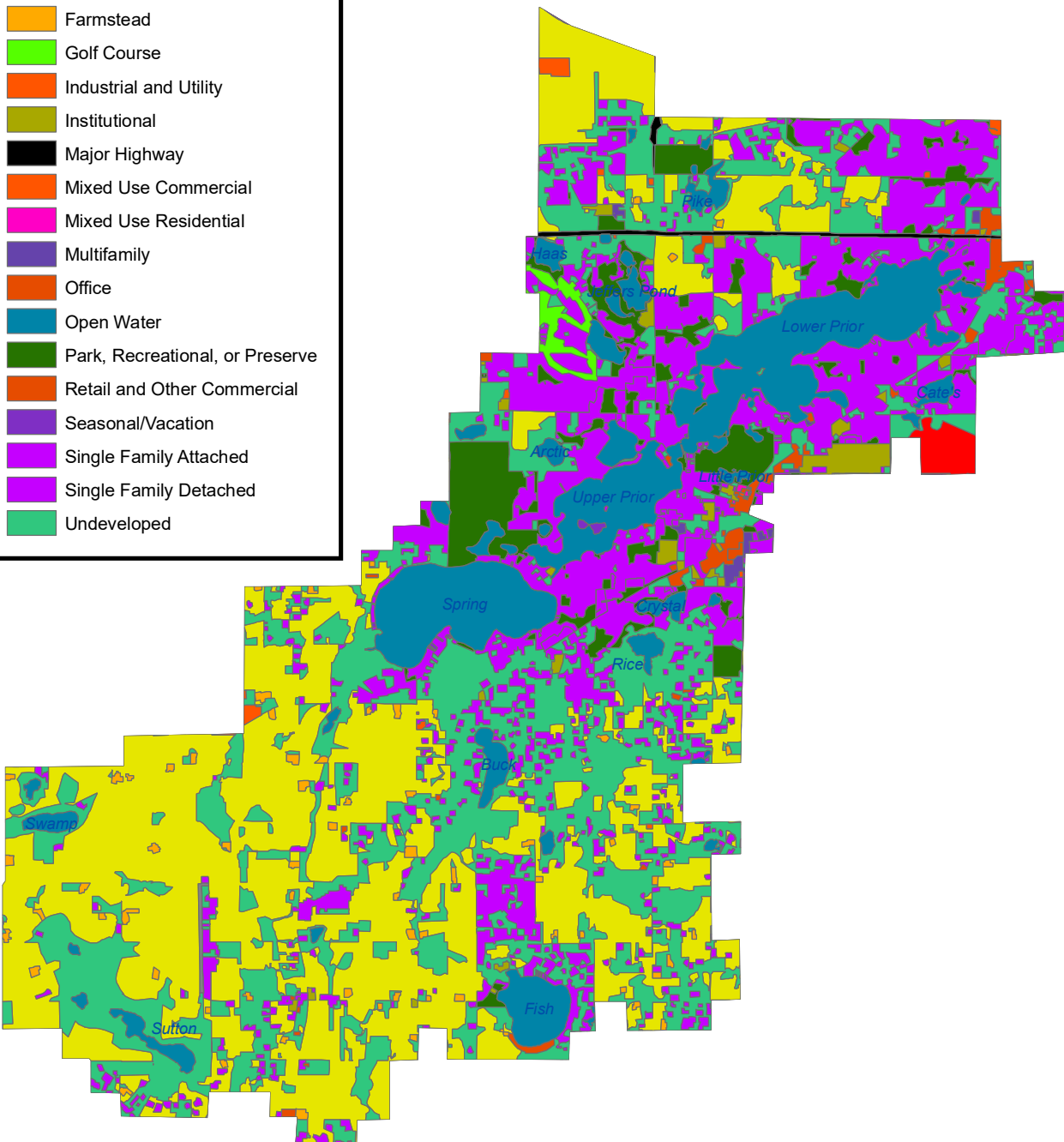
Sources: Esri, HERE, Garmin, USGS, Intermap, INCREMENT P, NRCan, Esri Japan, METI, Esri China (Hong Kong), Esri Korea, Esri (Thailand), NGCC, © OpenStreetMap contributors, and the GIS User Community

Prior Lake-Spring Lake Watershed District 2016 Land Use

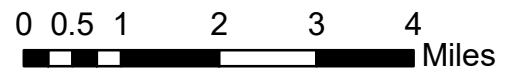
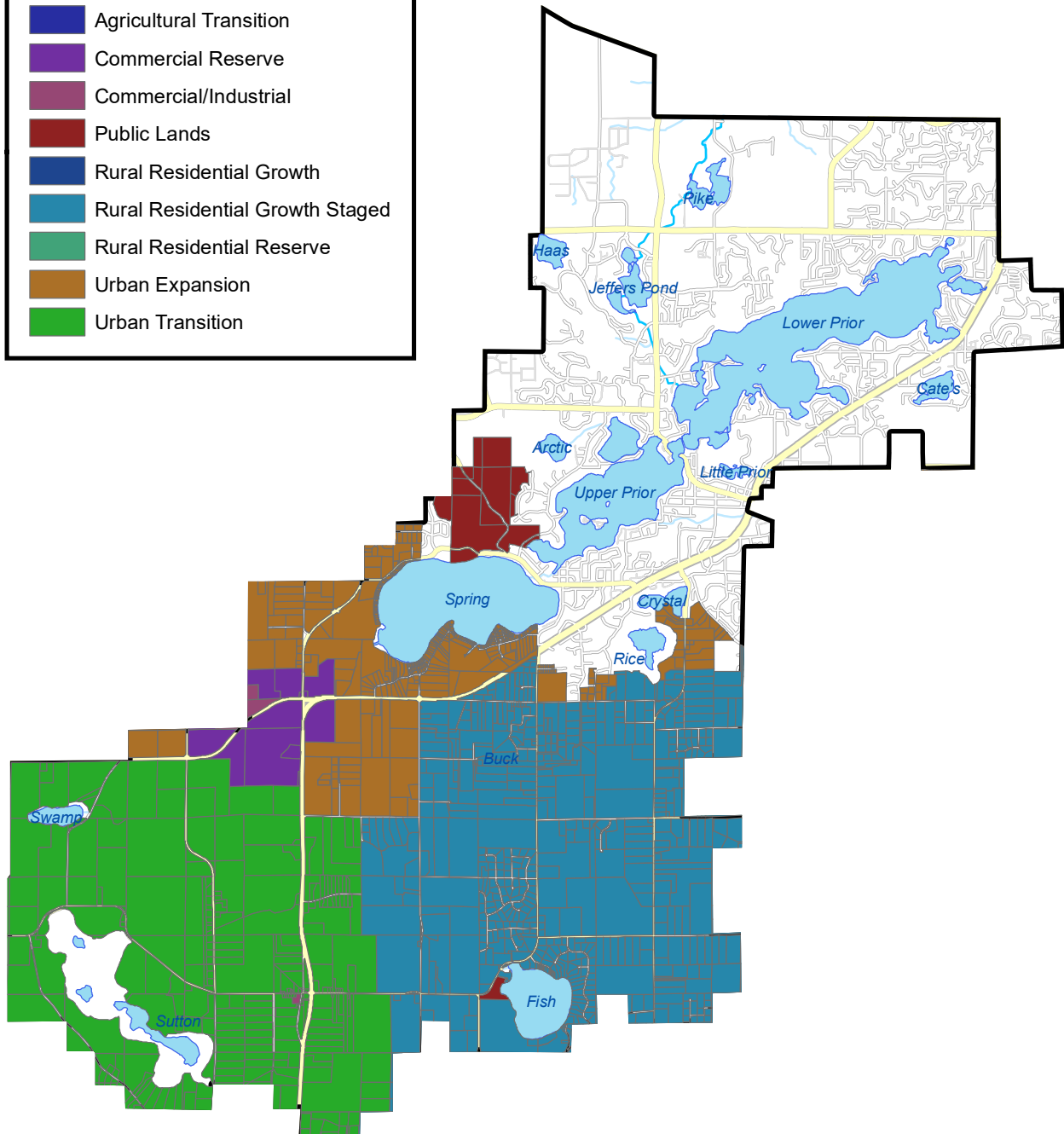
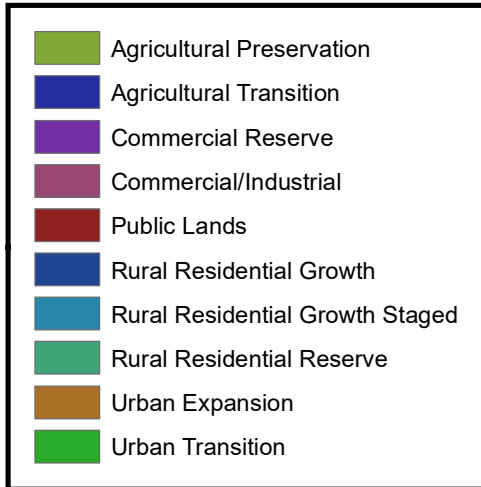
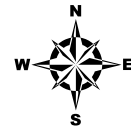


Land Use 2016

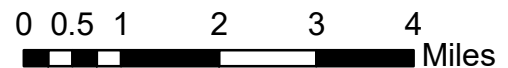
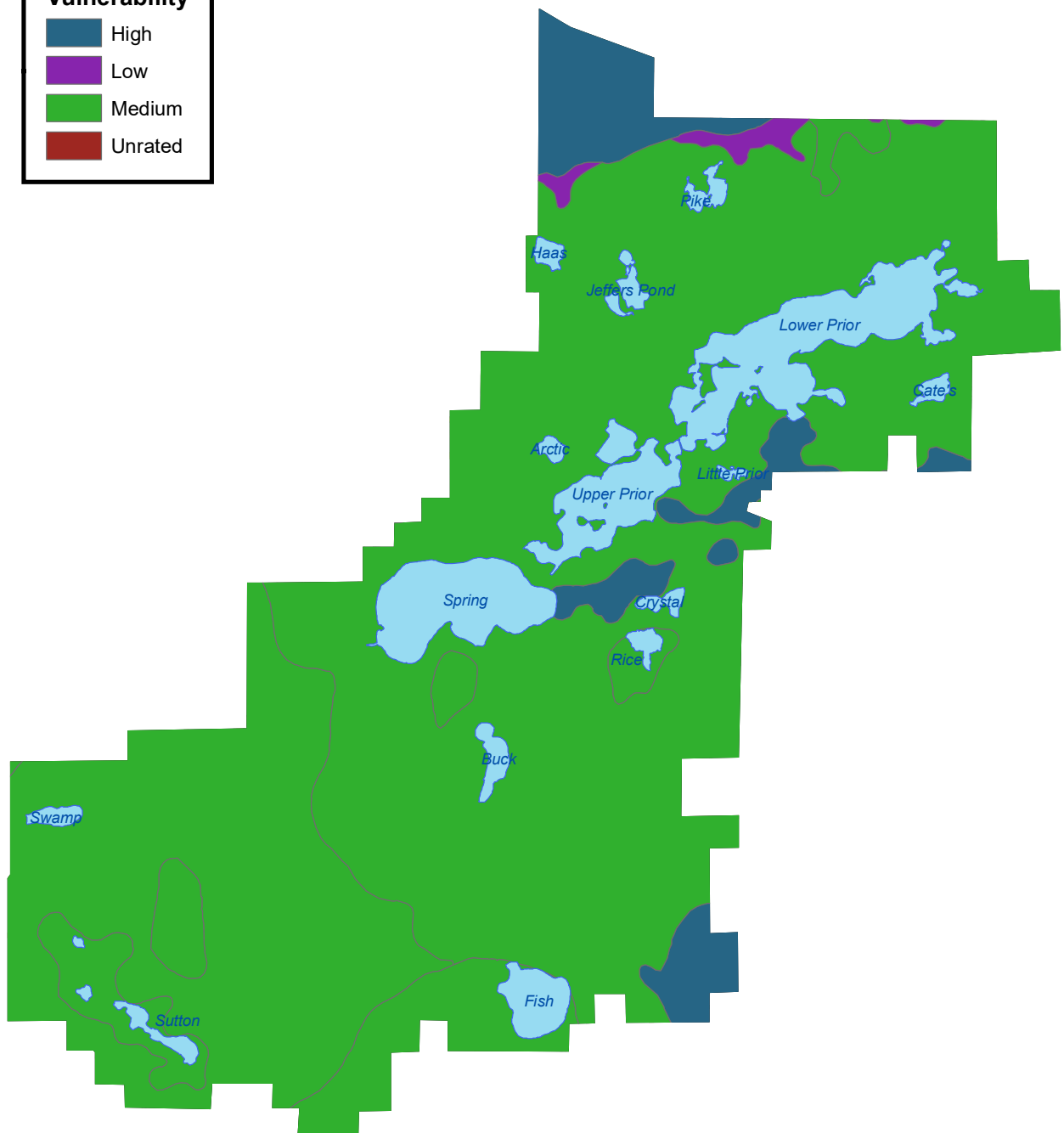
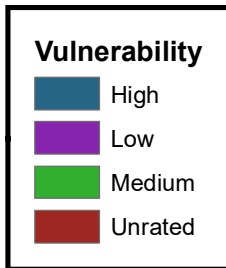
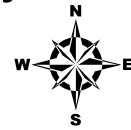
- Agricultural
- Airport
- Extractive
- Farmstead
- Golf Course
- Industrial and Utility
- Institutional
- Major Highway
- Mixed Use Commercial
- Mixed Use Residential
- Multifamily
- Office
- Open Water
- Park, Recreational, or Preserve
- Retail and Other Commercial
- Seasonal/Vacation
- Single Family Attached
- Single Family Detached
- Undeveloped



Prior Lake-Spring Lake Watershed District Scott County 2030 Planned Land Use



Prior Lake-Spring Lake Watershed District Water Table Aquifer Vulnerability

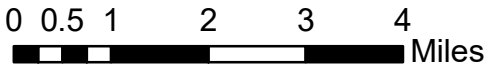
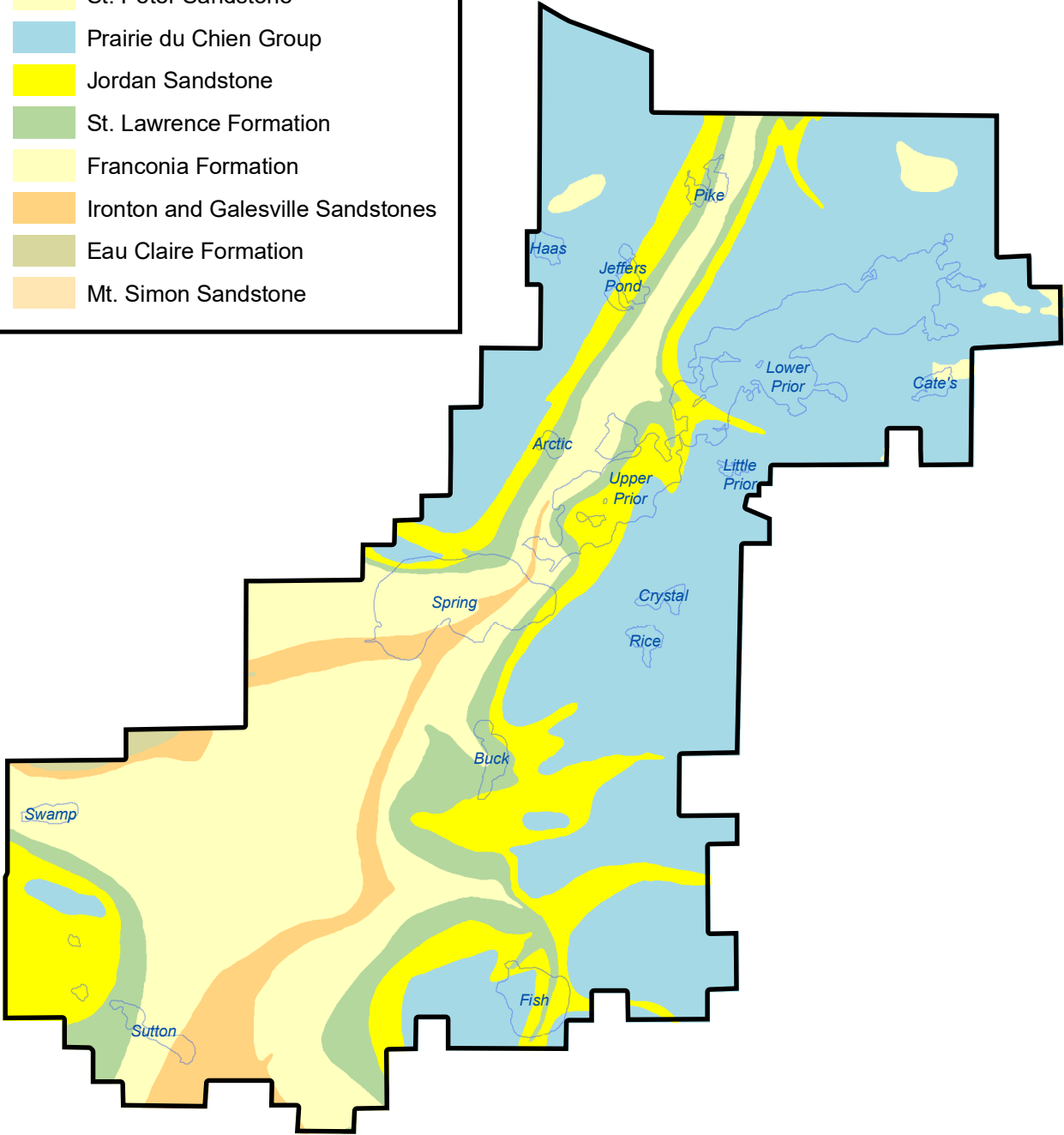


Prior Lake-Spring Lake Watershed District Bedrock Geology

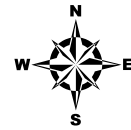


Bedrock Geology

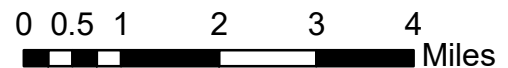
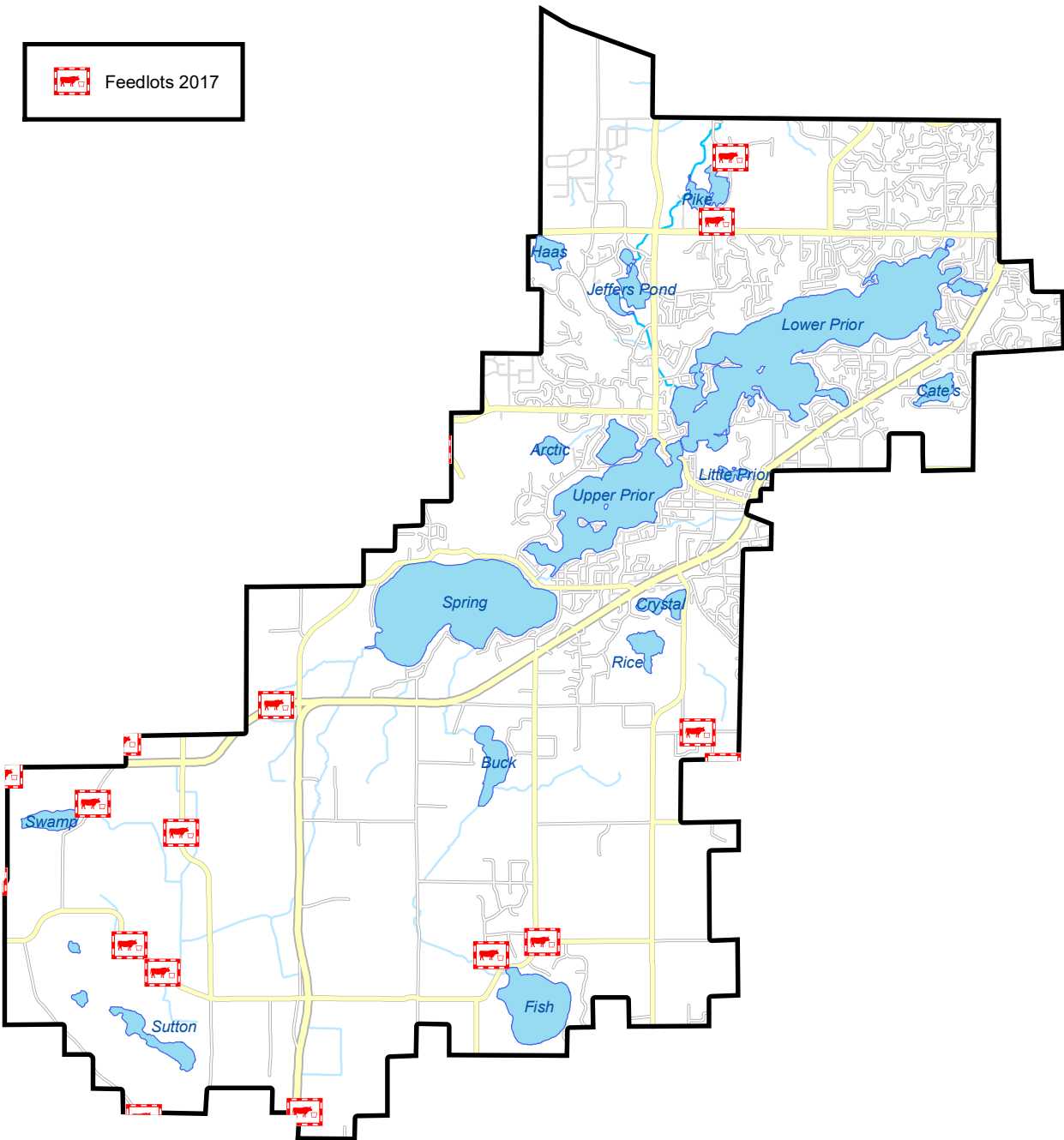
- St. Peter Sandstone
- Prairie du Chien Group
- Jordan Sandstone
- St. Lawrence Formation
- Franconia Formation
- Ironton and Galesville Sandstones
- Eau Claire Formation
- Mt. Simon Sandstone



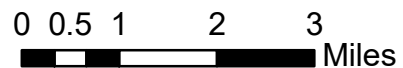
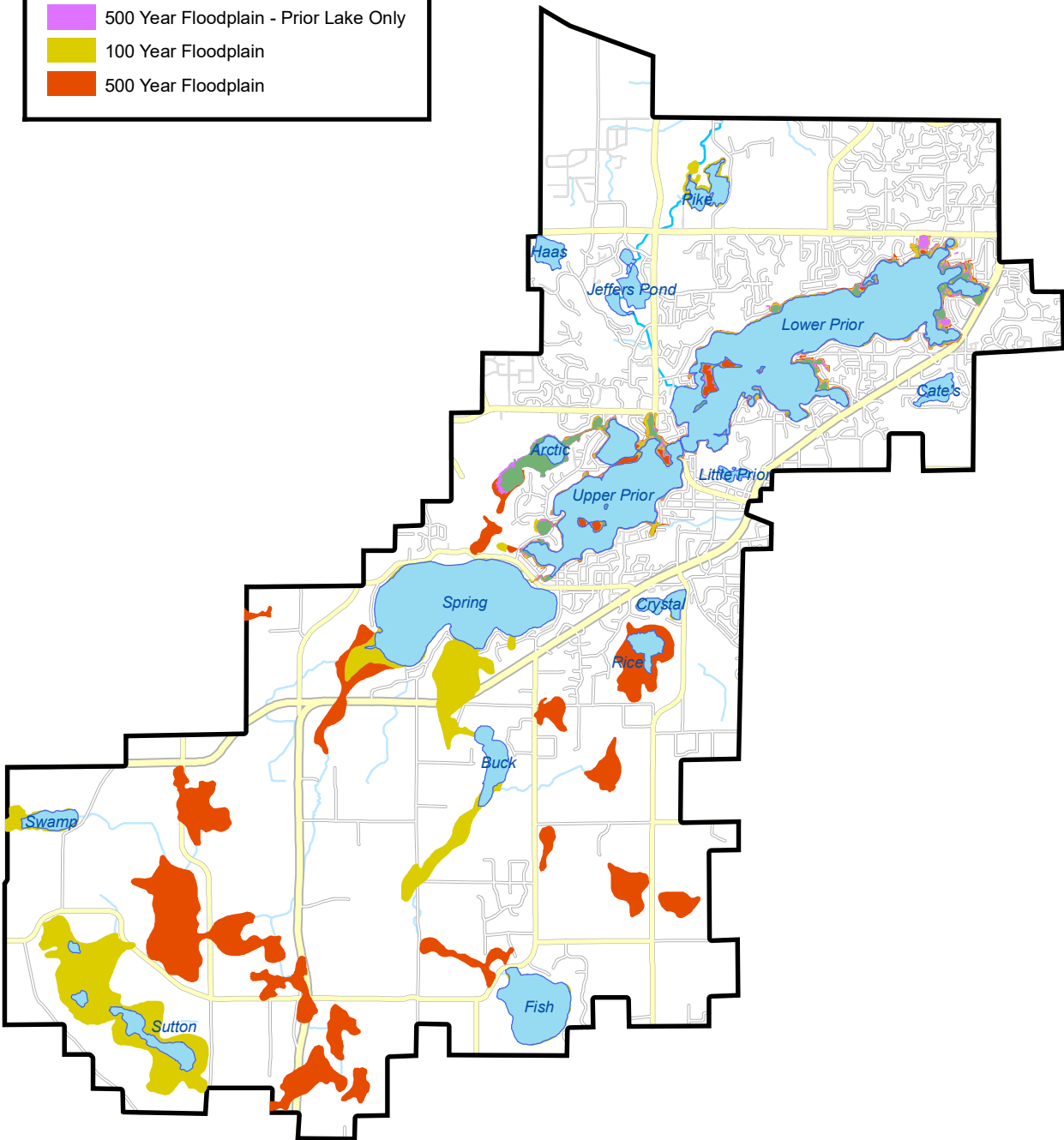
Prior Lake-Spring Lake Watershed District 2017 Feedlots



 Feedlots 2017



Prior Lake-Spring Lake Watershed District Floodplain Map










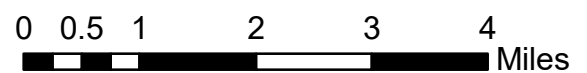
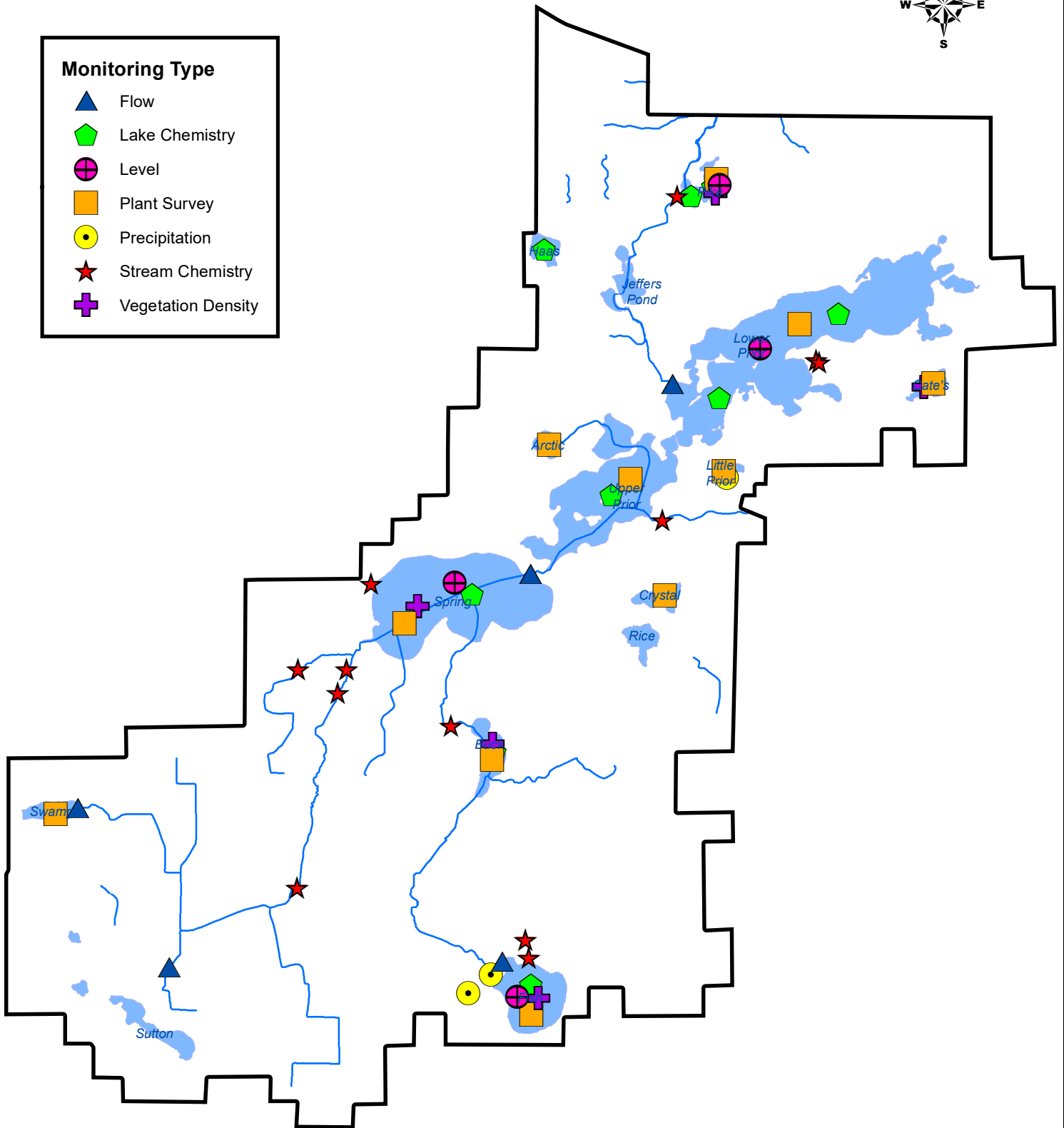
Source: MN GeoSpatial Database - FEMA Digital Flood Rate Insurance Maps (DFIRM) and City of Prior Lake Files. <http://msc.fema.gov> contains the latest floodplain maps.

Prior Lake-Spring Lake Watershed District 2020 Monitoring Sites



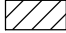
Monitoring Type

-  Flow
-  Lake Chemistry
-  Level
-  Plant Survey
-  Precipitation
-  Stream Chemistry
-  Vegetation Density









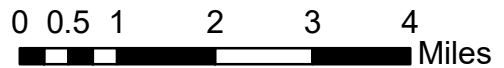
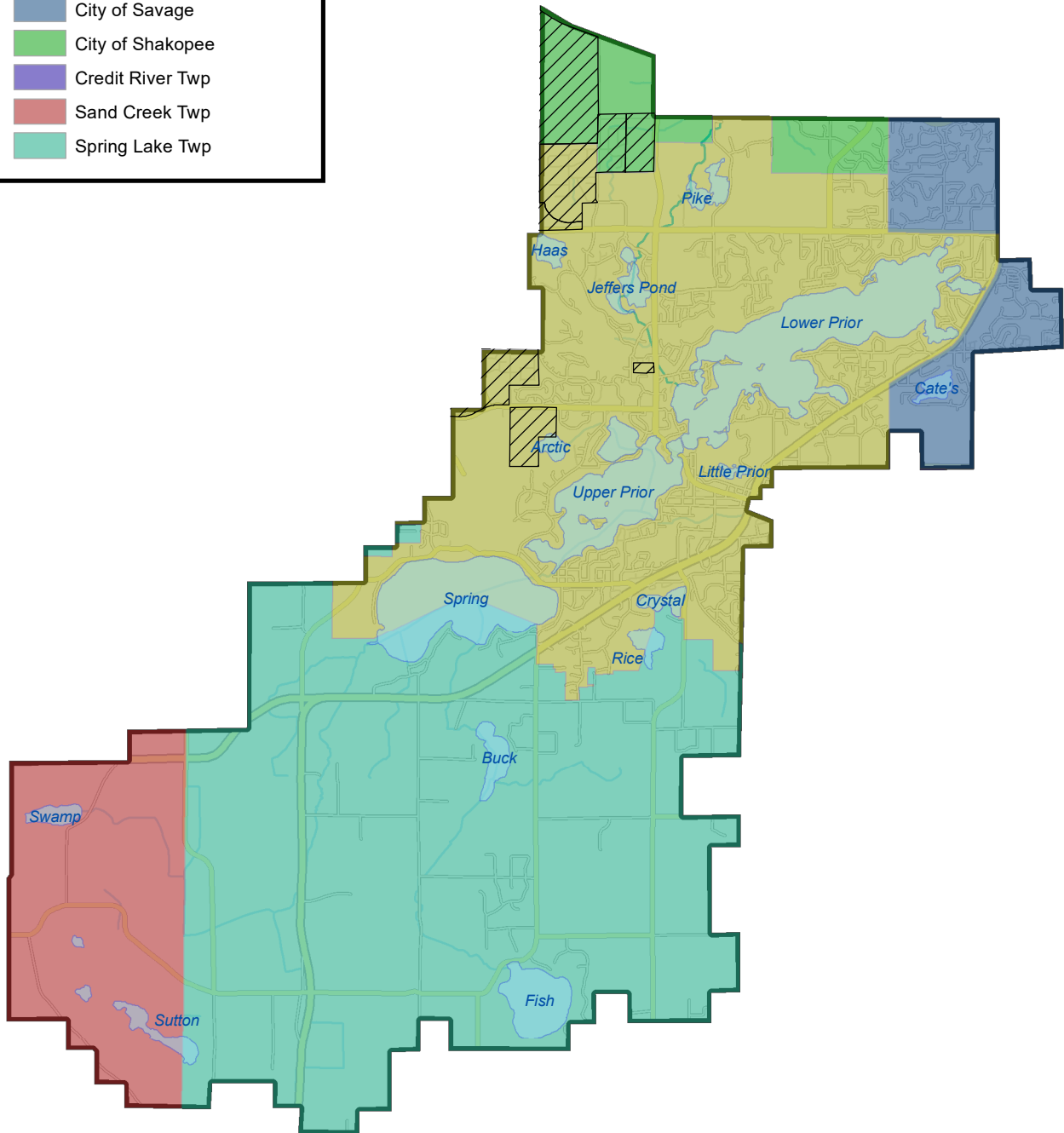
Prior Lake-Spring Lake Watershed District Tribes and Municipalities



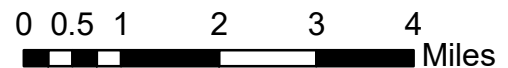
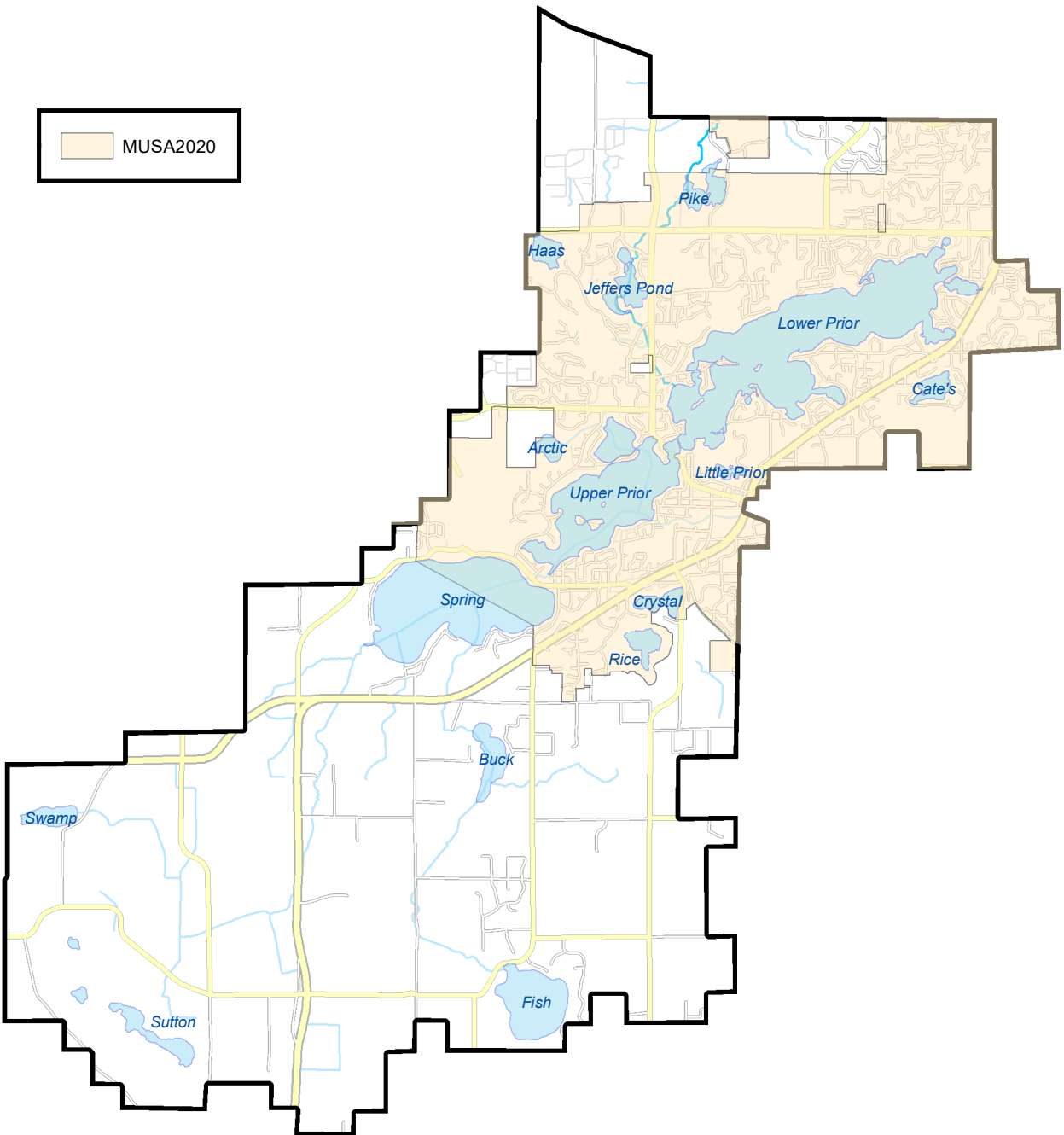
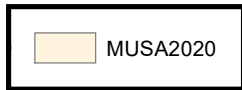
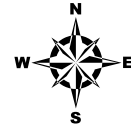
 SMSC Tribe Boundary

Municipalities in PLSLWD

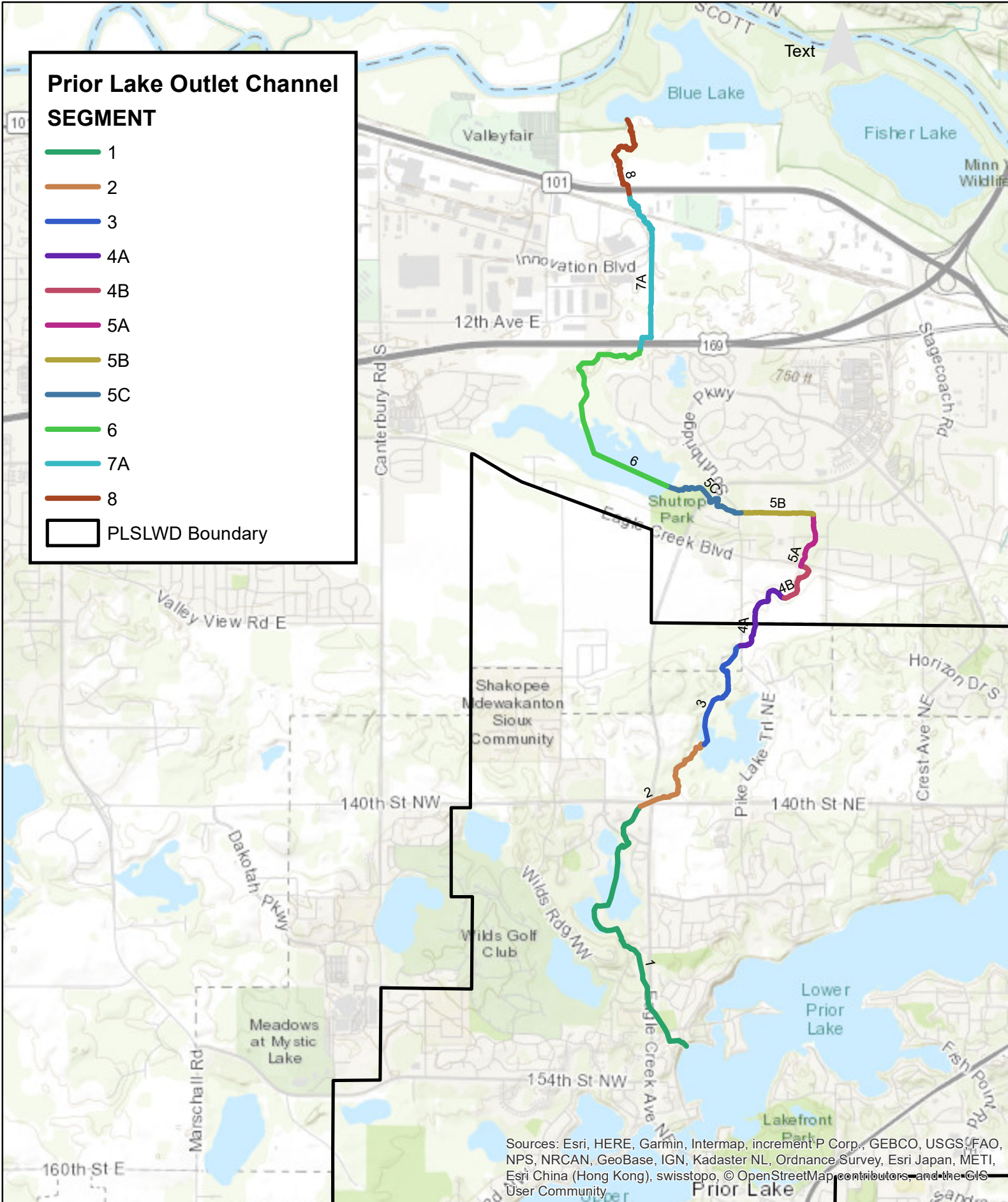
-  City of Prior Lake
-  City of Savage
-  City of Shakopee
-  Credit River Twp
-  Sand Creek Twp
-  Spring Lake Twp



Prior Lake-Spring Lake Watershed District Municipal Urban Service Area



Prior Lake-Spring Lake Watershed District Prior Lake Outlet Channel

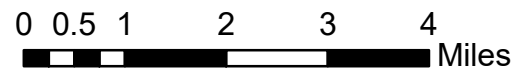
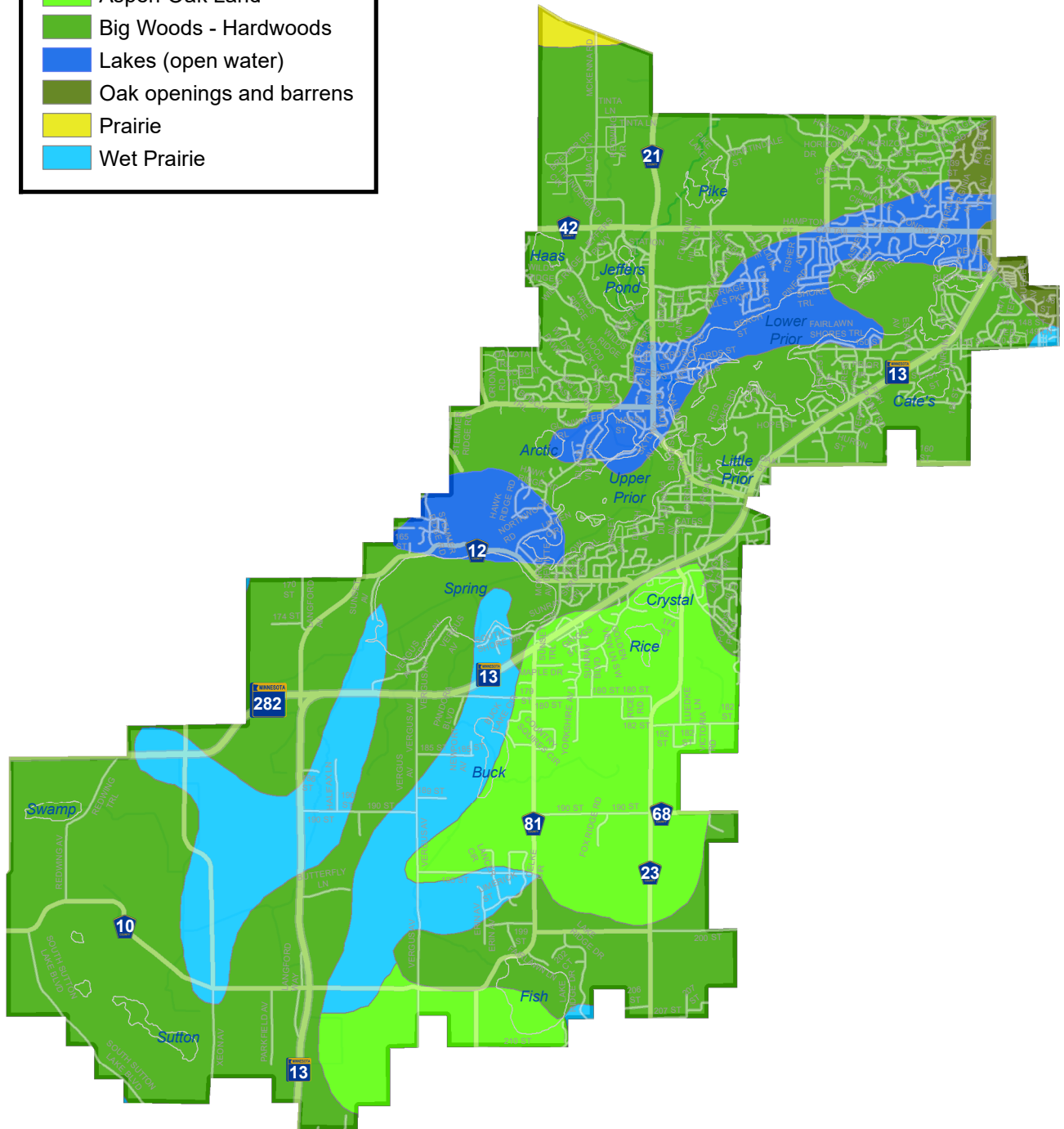


Sources: Esri, HERE, Garmin, Intermap, increment P Corp., GEBCO, USGS, FAO, NPS, NRCAN, GeoBase, IGN, Kadaster NL, Ordnance Survey, Esri Japan, METI, Esri China (Hong Kong), swisstopo, © OpenStreetMap contributors, and the GIS User Community

Prior Lake-Spring Lake Watershed District Pre-Settlement Vegetation Map



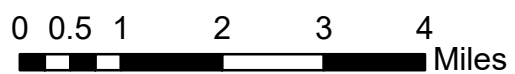
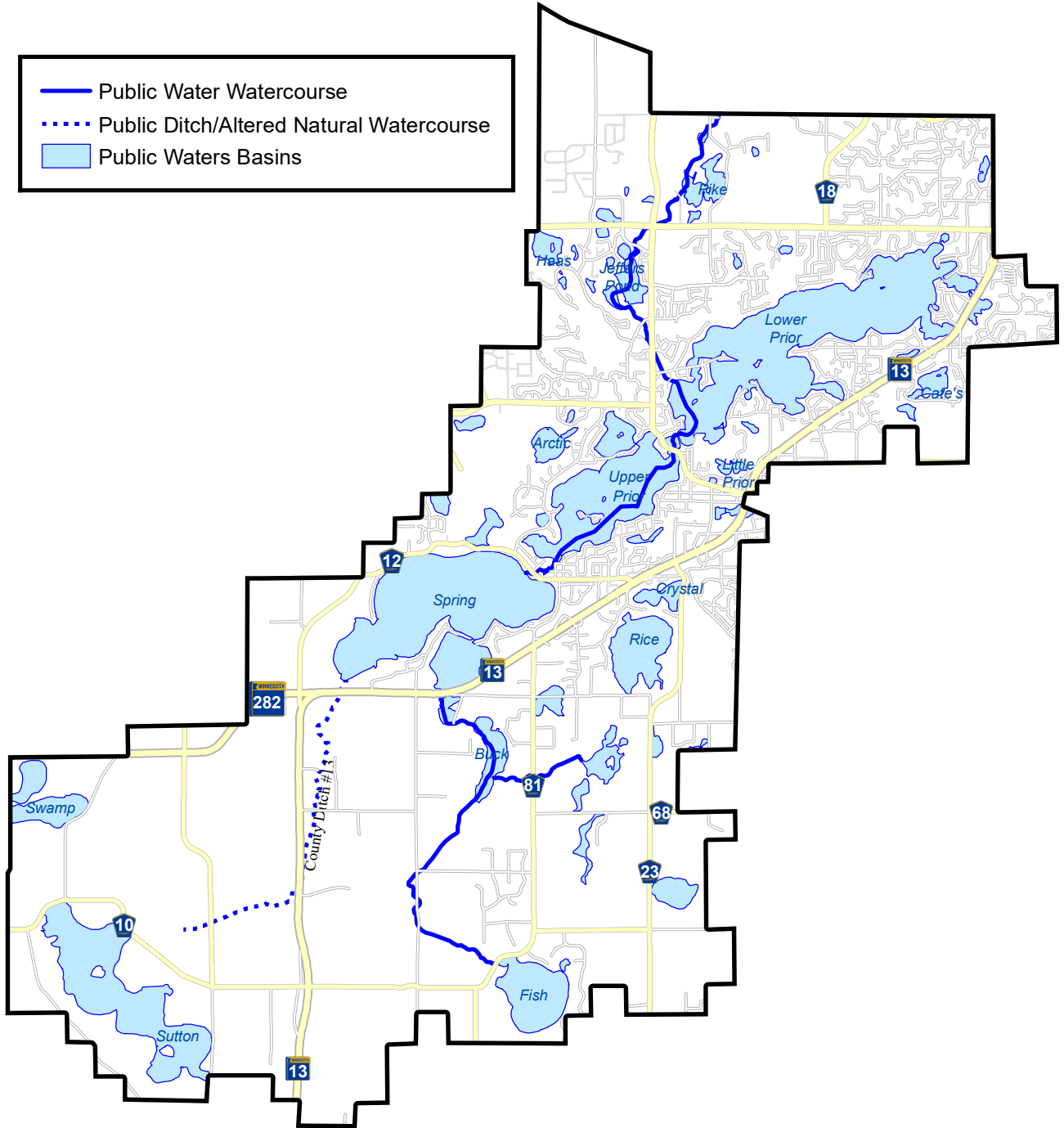
- Aspen-Oak Land
- Big Woods - Hardwoods
- Lakes (open water)
- Oak openings and barrens
- Prairie
- Wet Prairie



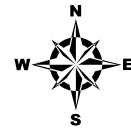
Prior Lake-Spring Lake Watershed District MN Public Waters Inventory Map





- Public Water Watercourse
- ⋯ Public Ditch/Altered Natural Watercourse
- Public Waters Basins




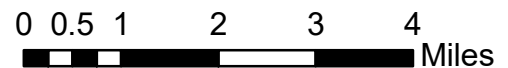
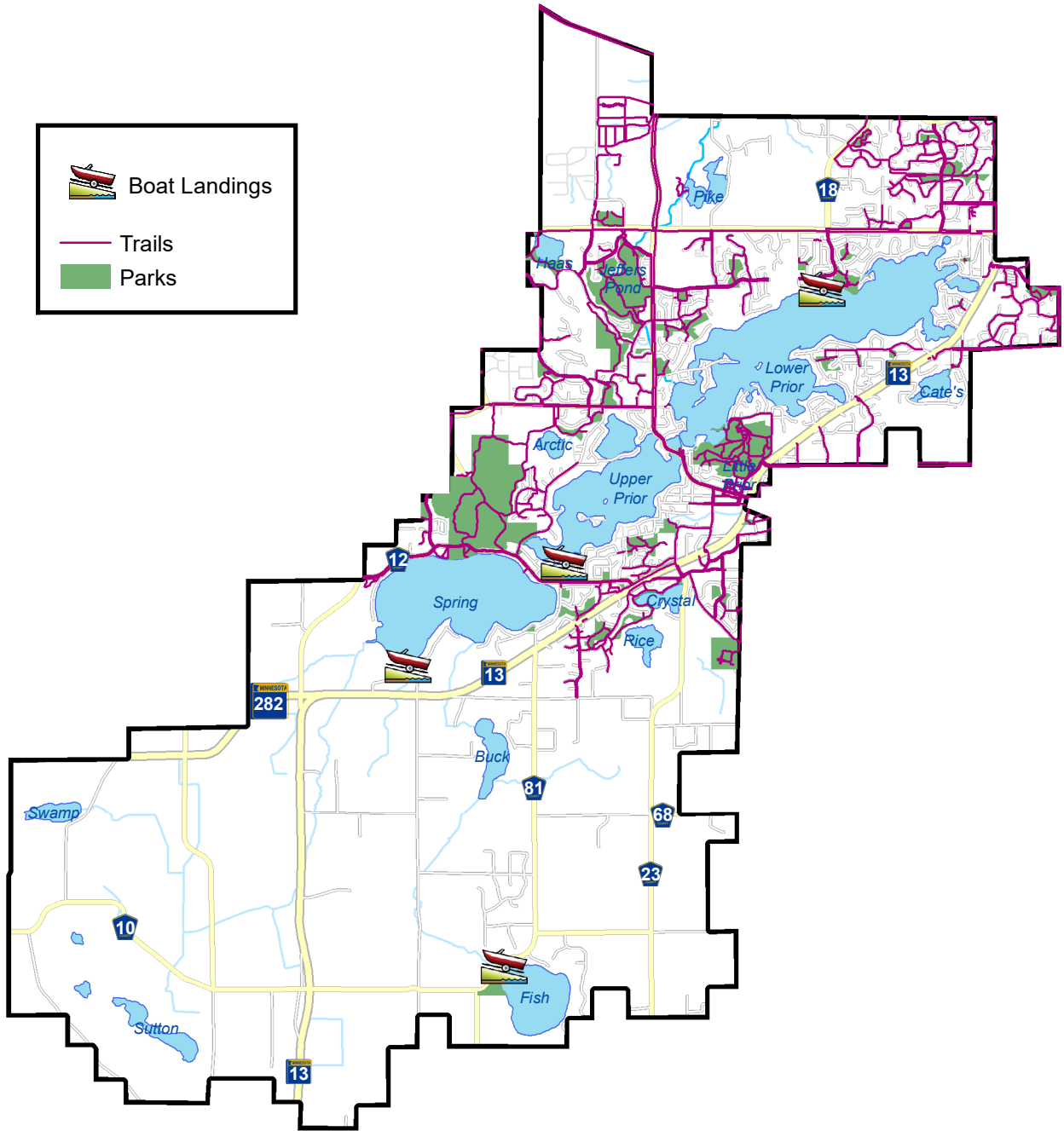
Prior Lake-Spring Lake Watershed District Recreational Resources



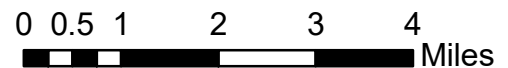
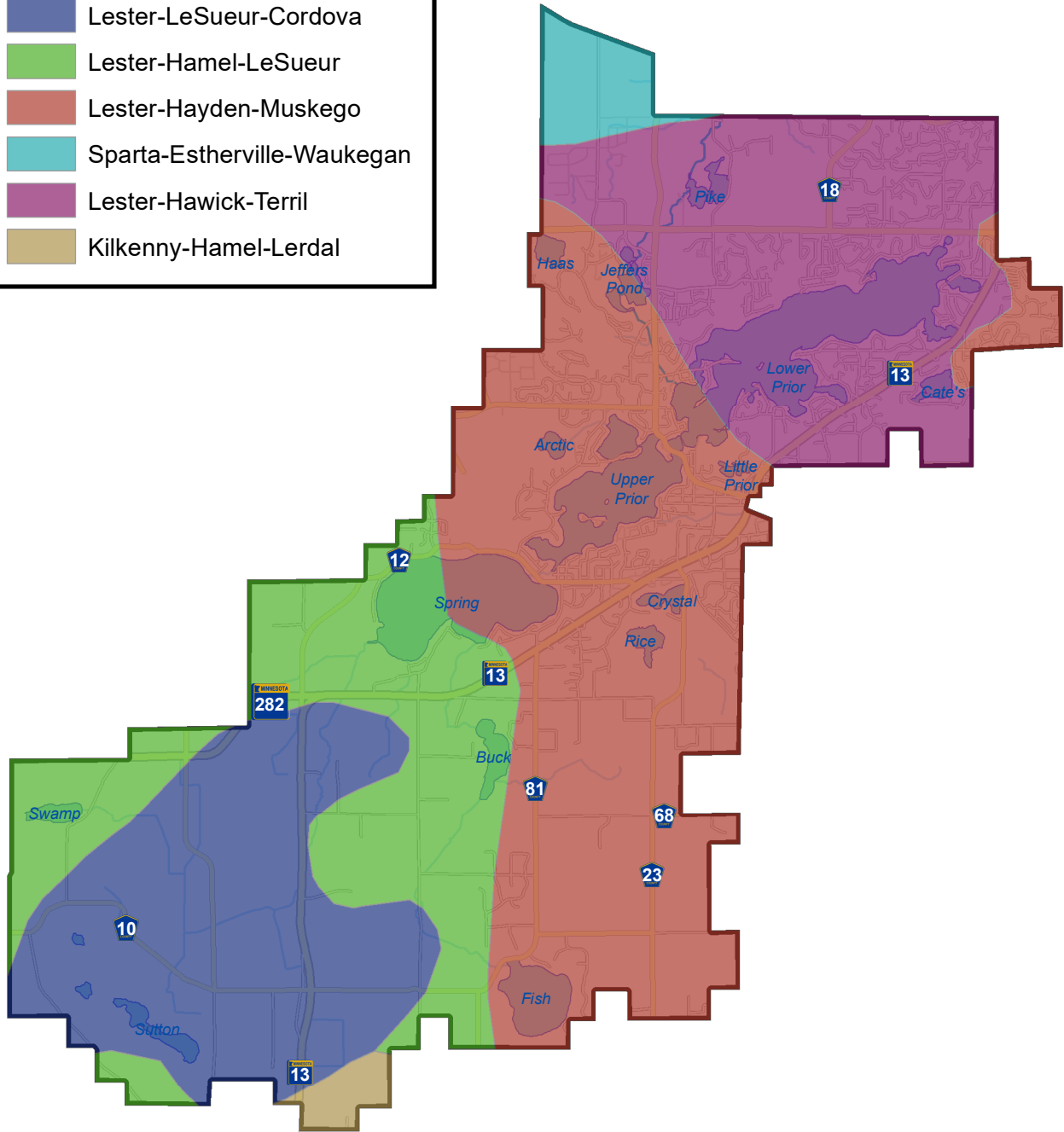
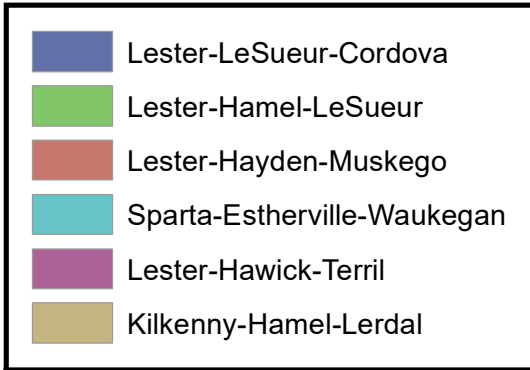
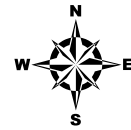
 Boat Landings

 Trails






 Parks

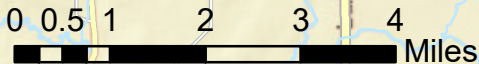
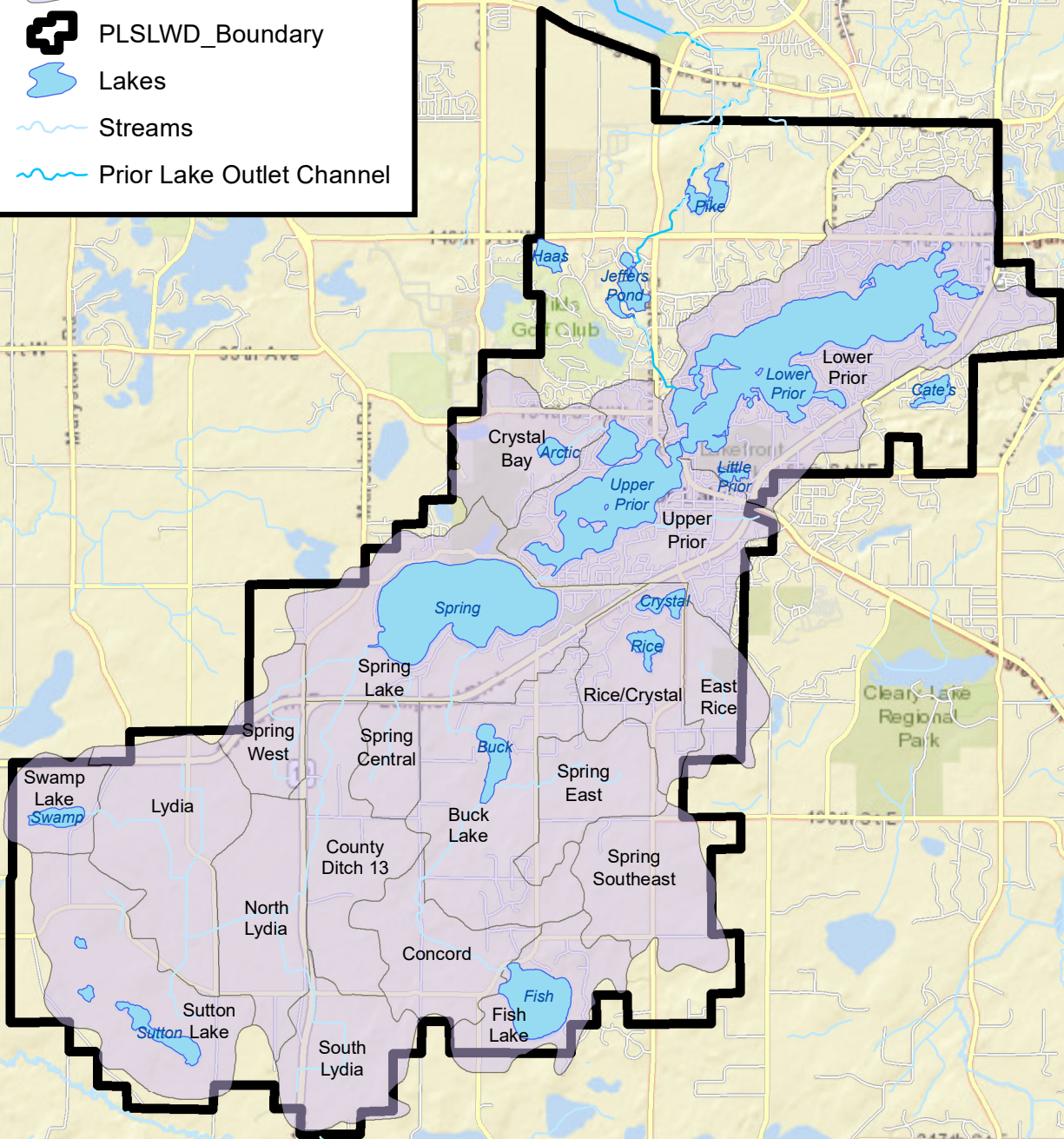


Prior Lake-Spring Lake Watershed District Soil Association Map



Prior Lake-Spring Lake Watershed District Sub-Watershed Map

-  PLSLWD Subwatersheds
-  PLSLWD_Boundary
-  Lakes
-  Streams
-  Prior Lake Outlet Channel



Sources: Esri, HERE, Garmin, USGS, Intermap, INCREMENT P, NRCan, Esri Japan, METI, Esri China (Hong Kong), Esri Korea, Esri (Thailand), NGCC, © OpenStreetMap contributors, and the GIS User Community

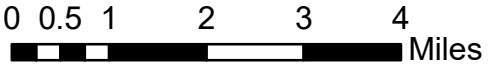
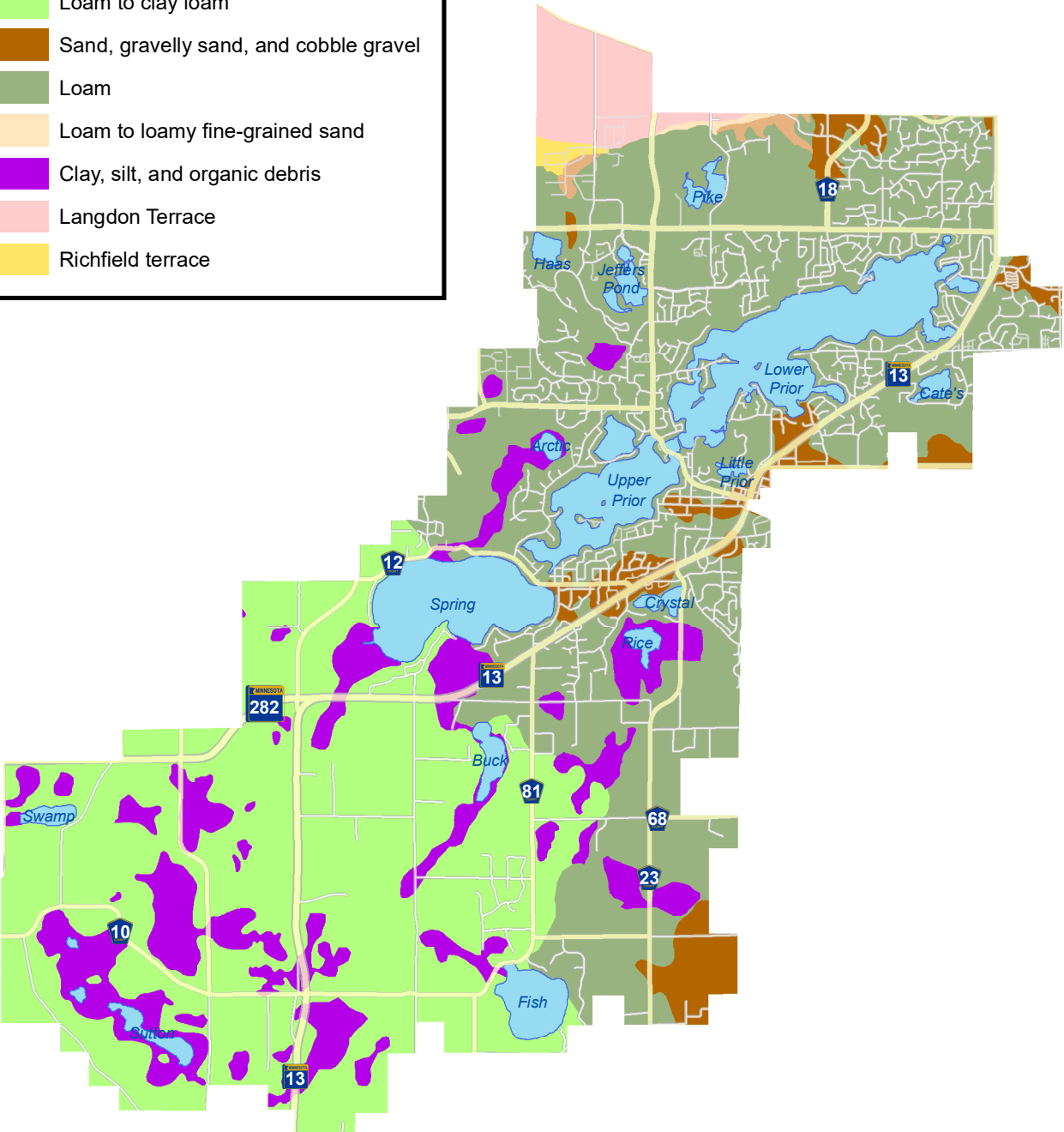
Source: PLSLWD Files

Prior Lake-Spring Lake Watershed District Surficial Geology

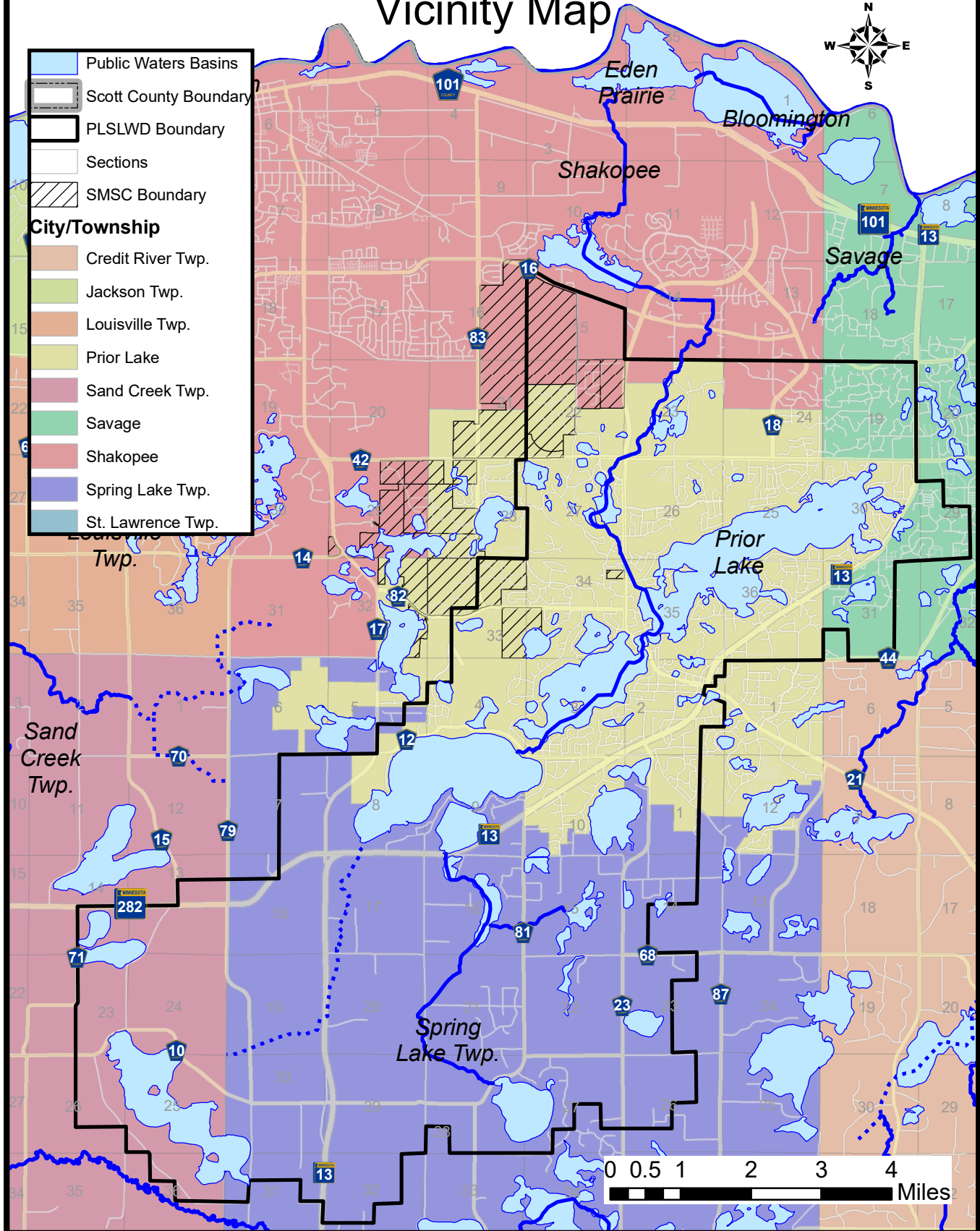


Surficial Geology

- Clay to boulders
- Loam to clay loam
- Sand, gravelly sand, and cobble gravel
- Loam
- Loam to loamy fine-grained sand
- Clay, silt, and organic debris
- Langdon Terrace
- Richfield terrace



Prior Lake-Spring Lake Watershed District Vicinity Map



Prior Lake-Spring Lake Watershed District Wetland Map



Legend:

- Lakes (represented by a solid blue rectangle)
- Wetlands (represented by a blue rectangle with a cross-hatch pattern)

